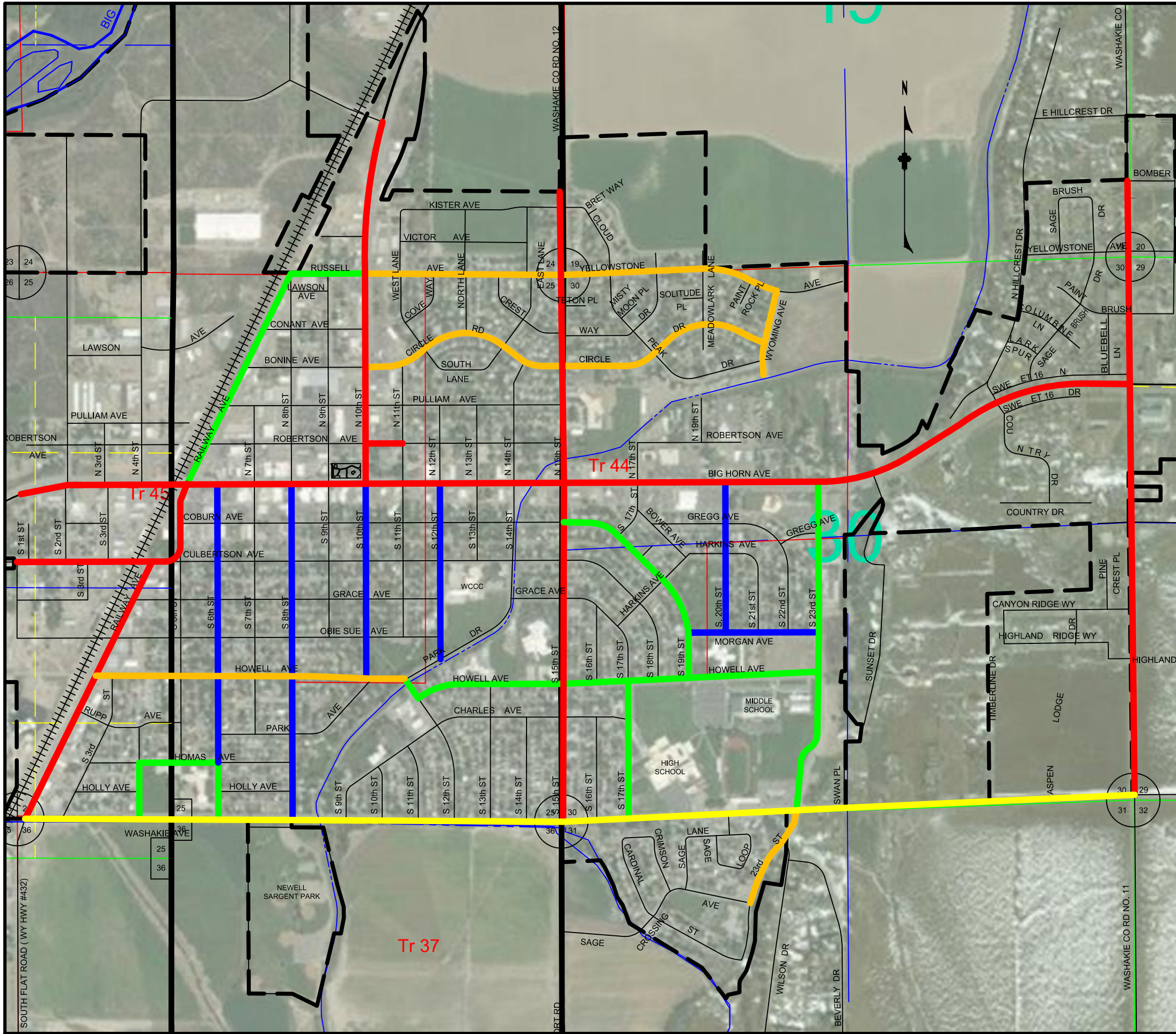


S:\Worland\1029-Streets-General\SnowRemoval\ctymp_C3D_online.dwg, 11x17 Snow Removal Routes, 2/14/2020 12:11 PM



LEGEND

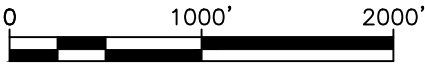
- CO-OP ROAD MAINTENANCE (approx. 2.04 mi.)
- PRIORITY LEVEL 1 (approx. 6.12 mi.)
- PRIORITY LEVEL 2 (approx. 2.95 mi.)
- PRIORITY LEVEL 3 (approx. 2.47 mi.)
- PRIORITY LEVEL 4 (approx. 2.33 mi.)
- CORPORATE BOUNDARY

NOTES:

- After a snow storm has ended and deposited approximately four inches (3") or more, the City will begin plowing the streets.
- Streets around schools are important and will be bladed as time allows during normal working hours after the main arterial and collector roads are cleared.
- In the event of high winds drifting any streets or alleys shut, they will be first priority to be opened up.
- If another snow storm deposits three inches plus (3"+), the cycle will start over with Big Horn Avenue.

CITY OF WORLAND
SNOW REMOVAL ROUTES

DECEMBER 2019



EAGLE ENGINEERING & SURVEYING, INC.

908 BIG HORN AVE – P.O. Box 638 – WORLAND, WY 82401 – (307) 347-8276